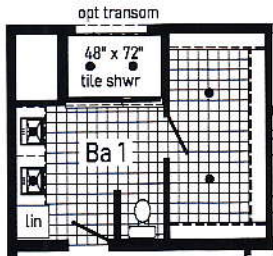
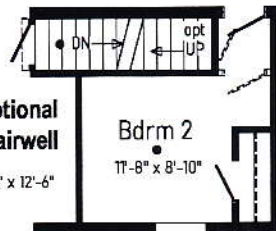


Optional Glamour Bath

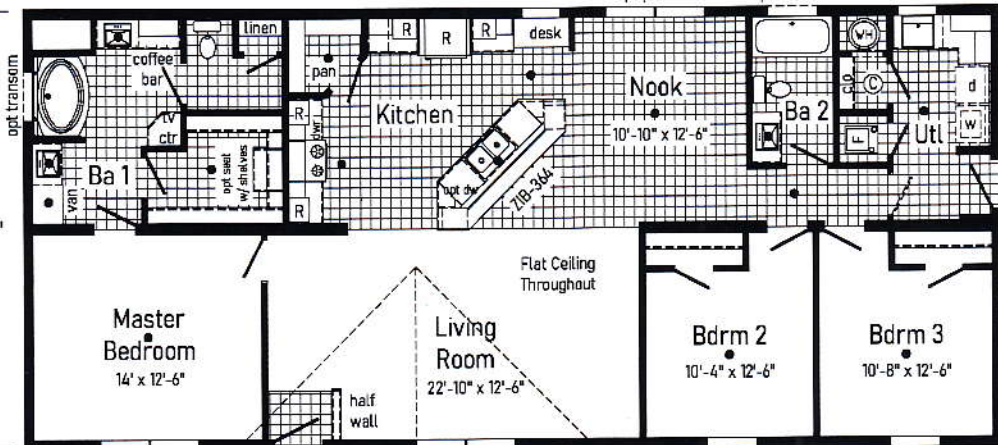


Optional 4'x6' Walk-In Tile Shower

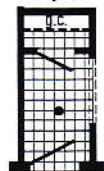


Optional Stairwell
21'-6\"/>

60'



Opt. Formal Foyer



Optional Chef's Signature Hood
(only with flat ceiling)

Flat Ceiling Throughout

Master Bedroom
14' x 12'-6"

Living Room
22'-10\"/>

Bdrm 2
10'-4\"/>

Bdrm 3
10'-8\"/>

Ⓞ - Omit shelf and water heater

R = Str. 12\"/>

● = Std. can light

26'-8"

opt transom

opt patio door opt transom

R

R

R

R

R

R

R

R

R

R

R

R

R